



Your opinions and feedback are very important in helping us plan and develop Our Kids Network products (OKN Data Portal, iparent), information (research reports and website content) and core messages (Asset-Building).

We need to know how you use the information and resources in your work in order to improve our existing resources. We also want to better understand how to plan and develop new ones that are relevant and useful to service providers.

We're asking for **about 7 minutes of your time** to complete the survey.

Thank you.

Click [here](#) to begin

Please complete this survey by: June 20, 2018

Instructions:

- Complete this survey **from the perspective of your organization**
- Complete this survey only once
- There are no right or wrong answers to the questions. Thoughtful and honest responses will give us the most valuable information.
- Your participation is purely voluntary and you can choose to not answer any or all of the questions.
- Be sure to read all the answer choices before marking your answer.
- Answer each question by clicking your mouse in the box of your choice.
- When you are finished, click on the SUBMIT button.

Results of this survey will be available in Fall 2018.

*The survey provides you with an opportunity to express your opinions and provide information **ANONYMOUSLY**. Your name and your organizational affiliation will **not** be attached in any way to the responses you give. Your responses will be grouped together with other responses so that your answers cannot be identified. Data will be collected on a secured site and analyzed by Our Kids Network researchers. No one else will have access to this information.*

SECTION A: YOUR KNOWLEDGE ABOUT OUR KIDS NETWORK



1. Are you **AWARE** of Our Kids Network in Halton?
 - Yes
 - No (skip to next section)

2. How **KNOWLEDGEABLE** are you about the purpose of Our Kids Network?
 - Not at all knowledgeable
 - A little knowledgeable
 - Knowledgeable
 - Very knowledgeable
 - Don't know

3. How often have you **SHARED** information about Our Kids Network with other people?
 - Never
 - Rarely (shared 1-2 times)
 - Occasionally (3-5 times)
 - Often (6-10 times)
 - Very often (more than 10 times)

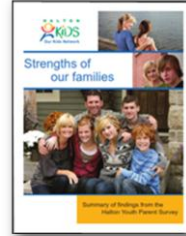
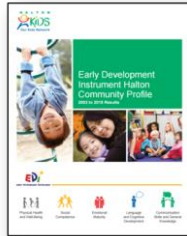
4. Our Kids Network has **INTRODUCED** me to new ideas or new ways of thinking.
 - Strongly Disagree
 - Disagree
 - Neither Disagree or Agree
 - Agree
 - Strongly Agree

5. My knowledge about Our Kids Network has **INFLUENCED** the way I do my work.
 - Strongly Disagree
 - Disagree
 - Neither Disagree or Agree
 - Agree
 - Strongly Agree

6. Our Kids Network has **INFLUENCED** the way my organization or community meets the needs of children and youth.
 - Strongly Disagree
 - Disagree
 - Neither Disagree or Agree
 - Agree
 - Strongly Agree
 - Don't know

SECTION B: COMMUNITY DATA REPORTS

This next section of questions asks about Our Kids Network's (OKN) community data reports (e.g., Tell Them From Me (TTFM)/OurSCHOOL Community Profile Reports, Vision for Children in Halton Report Card, neighbourhood profiles, profiles from the Halton Youth Survey, or research reports using data from OKN's Kindergarten Parent Survey, or the Early Development Instrument (EDI)).



7. Are you **AWARE** of any of Our Kids Network's community data reports?
 - Yes
 - No (skip to next section)

8. Have you **READ** any of Our Kids Network's community data reports?
 - Yes
 - No (skip to next section)

9. Overall, the community data report(s) were **EASY** to understand.
 - Strongly Disagree
 - Disagree
 - Neither Disagree or Agree
 - Agree
 - Strongly Agree

10. How often have you **SHARED** any of the community data reports with other people?
 - Never
 - Rarely (shared 1-2 times)
 - Occasionally (3-5 times)
 - Often (6-10 times)
 - Very often (more than 10 times)

11. The community data reports have **INTRODUCED** me to new information.
 - Strongly Disagree
 - Disagree
 - Neither Disagree or Agree
 - Agree
 - Strongly Agree

12. How **OFTEN** have you used any of the information in the community data reports in your own work?
 - Never
 - Rarely (shared 1-2 times)
 - Occasionally (3-5 times)
 - Often (5-10 times)
 - Very often (more than 10 times)

SECTION C: Asset-Building

The next questions are about the Asset-Building (includes Developmental Assets, Developmental Relationships and Family Assets). The concept of Developmental Assets was developed by the Search Institute in the United States and is used by Our Kids Network as a framework for positive child and youth development.

13. Have your **HEARD** about Asset-Building?

- Yes
- No (skip to next section)

14. How **KNOWLEDGEABLE** are you about Asset-Building?

- Not at all knowledgeable
- A little knowledgeable
- Knowledgeable
- Very knowledgeable
- Don't know

15. The Asset-Building approach is **EASY** to understand.

- Strongly Disagree
- Disagree
- Neither Disagree or Agree
- Agree
- Strongly Agree

16. How often have you **SHARED** with other people information about Asset-Building?

- Never
- Rarely (shared 1-2 times)
- Occasionally (3-5 times)
- Often (6-10 times)
- Very often (more than 10 times)

17. The Asset-Building approach has **INTRODUCED** me to new ideas or new ways of thinking.

- Strongly Disagree
- Disagree
- Neither Disagree or Agree
- Agree
- Strongly Agree

18. To what **EXTENT** is Asset-Building part of your organizational or community planning?

- Not at all
- Somewhat
- Quite a bit
- Extensive
- Don't Know

SECTION D: Halton iparent

The next questions are about Halton iparent. Halton iparent gives families easy, online access to Halton-specific parenting programs and information. It is a website for families with children of all ages, stages, and abilities, and provides information on supports and resources to build parenting skills.



19. Are you **AWARE** of Halton iParent?
- Yes
 - No (skip to next section)
20. Have you **USED** Halton iParent?
- Yes
 - No (skip to next section)
21. Halton iParent is **USEFUL**.
- Strongly Disagree
 - Disagree
 - Neither Disagree or Agree
 - Agree
 - Strongly Agree
22. How **OFTEN** have you told others about Halton iParent?
- Never
 - Rarely (shared 1-2 times)
 - Occasionally (3-5 times)
 - Often (6-10 times)
 - Very often (more than 10 times)
23. Halton iParent has **INTRODUCED** me to programs and services I did not know about.
- Strongly Disagree
 - Disagree
 - Neither Disagree or Agree
 - Agree
 - Strongly Agree
24. How **OFTEN** has Halton iParent helped your own program or organizational planning and/or work?
- Never
 - Rarely (shared 1-2 times)
 - Occasionally (3-5 times)
 - Often (6-10 times)
 - Very often (more than 10 times)

SECTION E: OUR KIDS NETWORK WEBSITE

The next questions are about the Our Kids Network website and the content available on the website.



[Print](#)

[Email](#)

[Share](#)

[Accessibility](#)

[Contact](#)

Select Language ▾

I'm looking for...

Our power is in our relationships and knowledge

25. Are you **AWARE** of the Our Kids Network website?

- Yes
- No (skip to next section)

26. Have you **READ** or **USED** the Our Kids Network website?

- Yes
- No (skip to next section)

27. The Our Kids Network website is **USEFUL**.

- Strongly Disagree
- Disagree
- Neither Disagree or Agree
- Agree
- Strongly Agree

28. How **OFTEN** have you told others about the Our Kids Network website?

- Never
- Rarely (shared 1-2 times)
- Occasionally (3-5 times)
- Often (6-10 times)
- Very often (more than 10 times)

29. The Our Kids Network website has **INTRODUCED** me to new information.

- Strongly Disagree
- Disagree
- Neither Disagree or Agree
- Agree
- Strongly Agree

30. How **OFTEN** have you used the Our Kids Network website for your organizational planning and/or work?

- Never
- Rarely (shared 1-2 times)
- Occasionally (3-5 times)
- Often (6-10 times)
- Very often (more than 10 times)

SECTION F: OUR KIDS NETWORK (OKN) DATA PORTAL

The next questions are about the Our Kids Network (OKN) Data Portal. The data portal is available online through the OKN website. The OKN Data Portal is an interactive, online database that contains community and neighbourhood-level information, demographics, OKN research data on health, safety, education, Developmental Assets®, Census data and more.



31. Are you **AWARE** of the OKN Data Portal?

- Yes
- No (skip to next section)

32. Have you **USED** the OKN Data Portal?

- Yes
- No (skip to next section)

33. The OKN Data Portal is useful.

- Strongly Disagree
- Disagree
- Neither Disagree or Agree
- Agree
- Strongly Agree

34. How **OFTEN** have you told others about the OKN Data Portal?

- Never
- Rarely (shared 1-2 times)
- Occasionally (3-5 times)
- Often (6-10 times)
- Very often (more than 10 times)

35. The OKN Data Portal has **INTRODUCED** me to new information.

- Strongly Disagree
- Disagree
- Neither Disagree or Agree
- Agree
- Strongly Agree

36. How **OFTEN** have you used any of the information in the OKN Data Portal for your organizational planning and/or work?

- Never
- Rarely (shared 1-2 times)
- Occasionally (3-5 times)
- Often (6-10 times)
- Very often (more than 10 times)

SECTION G: Our Kids Network (OKN) Early Years Initiative

The next questions are about the OKN Early Years Initiative. Nearly one-third of Kindergarten-age children in Halton are not meeting developmental expectations; the Our Kids Network Early Years Initiative works with communities to understand and take action on their own local early years needs by providing opportunities to work collectively. Over three years, the OKN Early Years Initiative is working within six neighbourhoods to improve transition to school and early childhood outcomes



Connect Play & Learn Every Day!

37. Are you **AWARE** of the OKN Early Years initiative in Halton?

- Yes
- No (skip to next section)

38. The information from the OKN Early Years Initiative (e.g., Connect Play & Learn Everyday products and messages) is **USEFUL**.

- Strongly Disagree
- Disagree
- Neither Disagree or Agree
- Agree
- Strongly Agree

39. How often have you **SHARED** information about the OKN Early Years initiative with other people?

- Never
- Rarely (shared 1-2 times)
- Occasionally (3-5 times)
- Often (6-10 times)
- Very often (more than 10 times)

40. OKN Early Years initiative has **INTRODUCED** me to new ideas or new ways of thinking.

- Strongly Disagree
- Disagree
- Neither Disagree or Agree
- Agree
- Strongly Agree

41. How **OFTEN** have you used any of the information from the OKN Early Years Initiative (e.g., Connect Play & Learn Everyday) for your organizational planning and/or work?

- Never
- Rarely (shared 1-2 times)
- Occasionally (3-5 times)
- Often (6-10 times)
- Very often (more than 10 times)

Section H: ABOUT YOU

42. Our Kids Network has many different committees and project teams. From the list below, please indicate on which OKN committees and/or project teams you currently serve (CHECK ALL THAT APPLY):
- Governance Committee (Senior Executive Group (SEG), Collective Impact Planning Committee (CIPC))
 - Backbone Support Committee (Communications Advisory, Research & Evaluation)
 - Planning Committees (Halton Prevention & Intervention Committee, Partners for Children with Differing Abilities, Early Years, School Years)
 - Alignment & Coordination Committee (Asset-Building Strategy Table, Parenting Strategy Table, Service Coordination)
 - Hub Planning Team (Acton, Aldershot, Milton)
 - Project Team (Early Development Instrument (EDI) Initiative Table, North Oakville Youth Initiative, Transitions)
43. On how many OKN committees do you currently serve?
- 1
 - 2
 - 3
 - 4
 - 5 or more
 - N/A: I'm part of a Hub Team or Project team only
44. Which category best describes your current job? (**CHECK ONLY ONE**)
- Direct front line worker (teacher, ECE, home visitor, parent educator, social worker, nurse, etc)
 - Non-front line worker but not part of management
 - Management (manager, supervisor, director, executive director, superintendent, etc.)
 - Funder
 - Community member/Volunteer
 - Elected official/Volunteer board member (town/regional councillor, school trustees, community agency board member)
 - Other (please specify _____)
45. Are you currently a member of an OKN Early Years Initiative Neighbourhood Table (Acton, N. Georgetwon, Upper East Milton, Escarpment, South Central Burlington, North Central Oakvill)?
- Yes (skip to next section)
 - No
46. If you would like to be contacted for a follow-up interview about your experiences with the OKN Early Years Initiative, please provide your email below:
- _____

ADDITIONAL COMMENTS

If you would like to add any comments or feedback on anything to do with Our Kids Network, use the space below.

THANK YOU FOR YOUR PARTICIPATION